



PROJECT QATAR 2025

THE WIND TURBINE

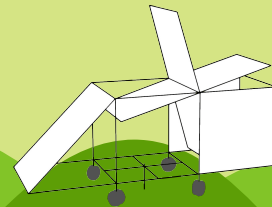
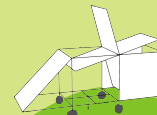
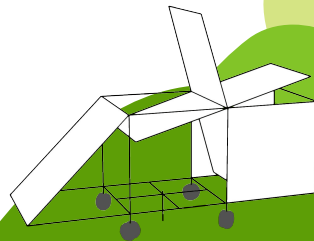
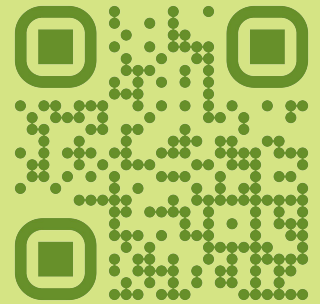
NO CONSTRUCTION REQUIRED

PORTABLE

LAND or SEA

MODULAR

ACCESSIBLE



Fabien Brun

+33 (0)6 43 64 16 68

contact@windtowatt.com

<https://www.linkedin.com/in/fabien-brun/>



OUR TEAM

FABIEN BRUN

CEO, Inventor, engineer,
military Sniper and Survival instructor



REYNALD ROMELARD

CEO of MSE62, supplier of industrial
equipment and metal machining services



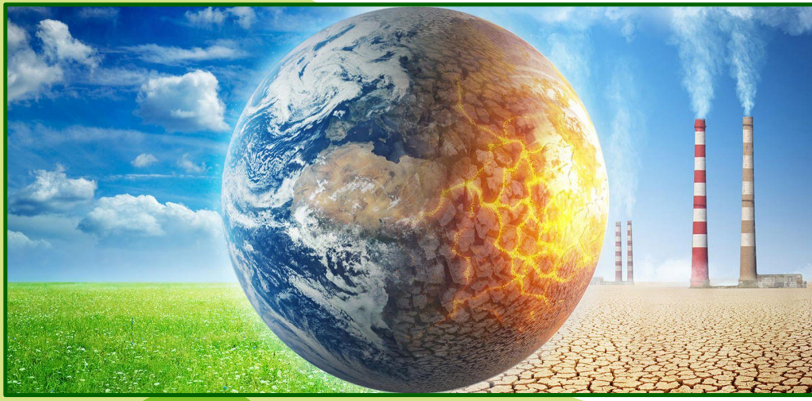
PATRICE MARGUERON

Mechanical Engineer –
Contractor



MSE62 - Factory with 35 years of
experience in machining industrial parts.





EMERGENCY !

In the face of a climate crisis, traditional solutions like wind and solar energy are not enough.

Wind to Watt paves a new path with its simple and ULTRA-efficient wind turbine.



PROBLEM

We have been developing green energy for 50 years, yet we are still lagging behind.

TRADITIONAL WIND TURBINES

TOO EXPENSIVE

TOO COMPLEX

SIGNIFICANT MECHANICAL CONSTRAINTS

VERY LONG INSTALLATION TIME

MANUFACTURING AND TRANSPORT DELAYS

POSSIBLE AT SEA BUT VERY COMPLICATED

PHOTOVOLTAIC PANELS

DEPENDENT ON SUNLIGHT

TOO COMPLEX

REQUIRE LARGE SURFACES

MANUFACTURING: HIGH ENERGY CONSUMPTION

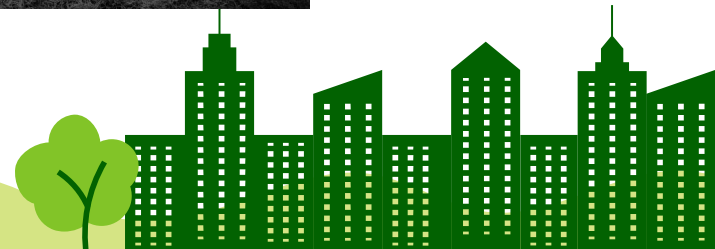
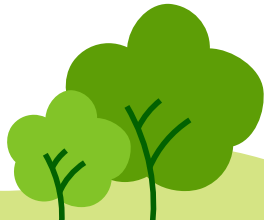
INSTALLATION COST

ONLY USABLE ON LAND



OUR WIND, YOUR ENERGY

The wind has always blown, and humans were already harnessing this energy in the 6th century.



Our solution

The WIND TO WATT wind turbine



SIMPLE



MODULABLE



TRANSPORTABLE



NO CONSTRUCTION REQUIRED



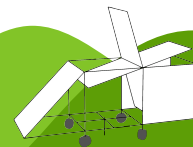
ACCESSIBLE



LAND or SEA

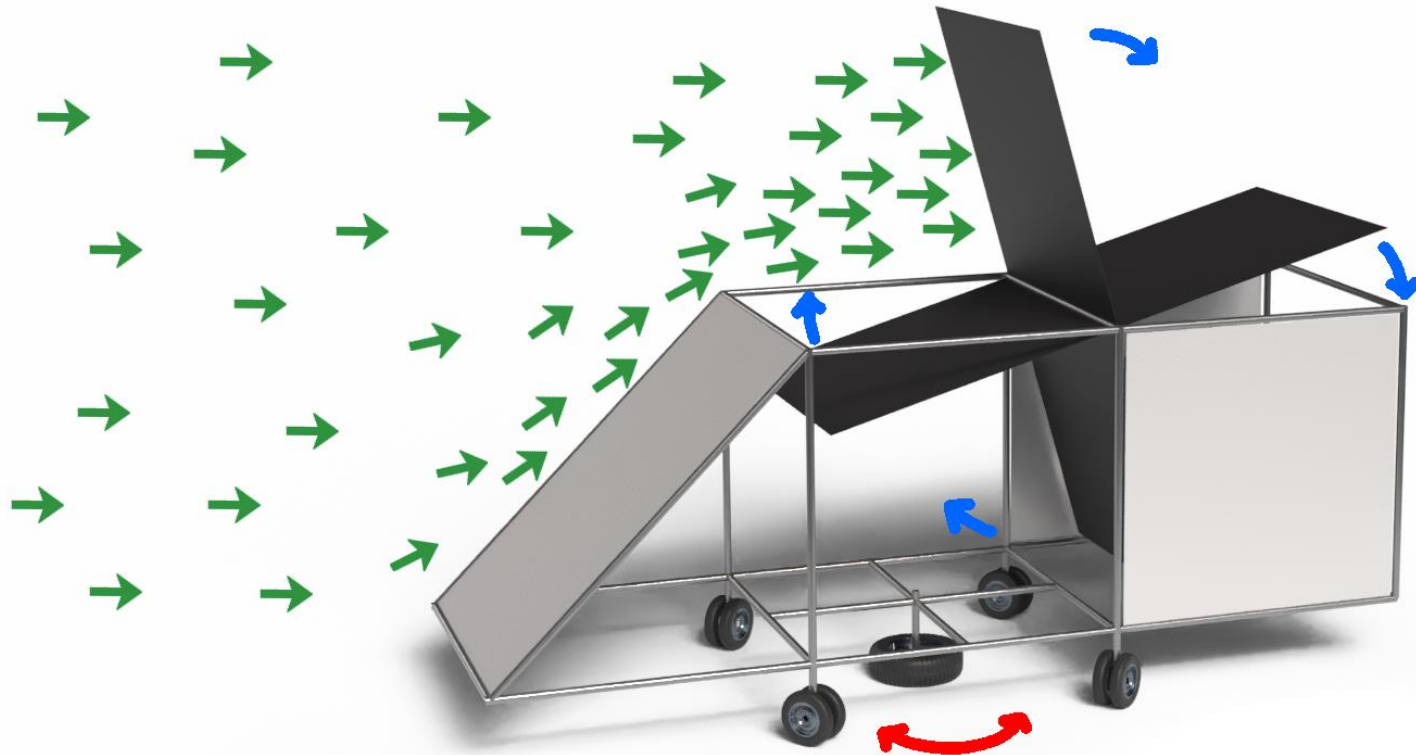


VIRTUOUS CIRCLE



Operation of the wind turbine

The wind turns blades that drive a generator.
The wind turbine automatically aligns itself to face the wind.

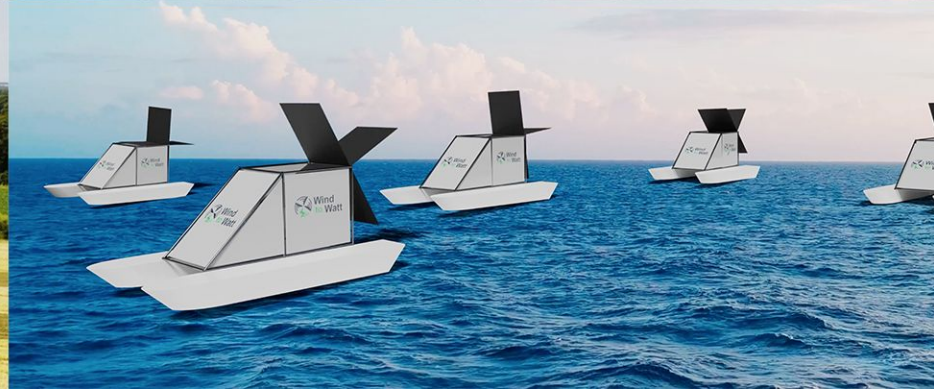
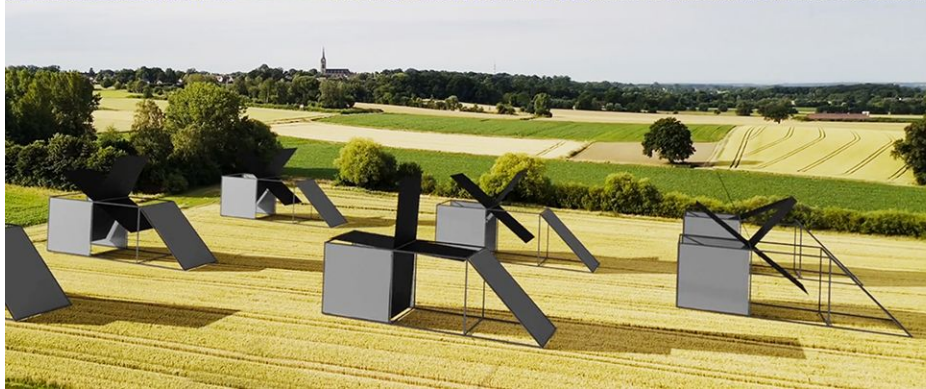
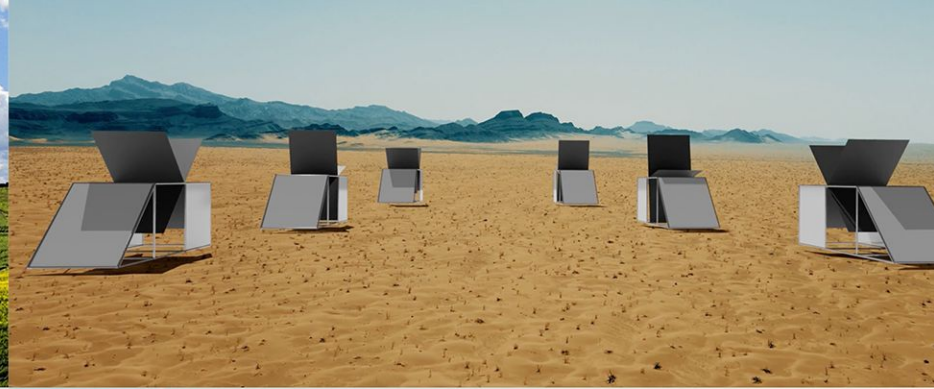


Easy installation

No need to be an expert – Easy to disassemble – Easy to transport

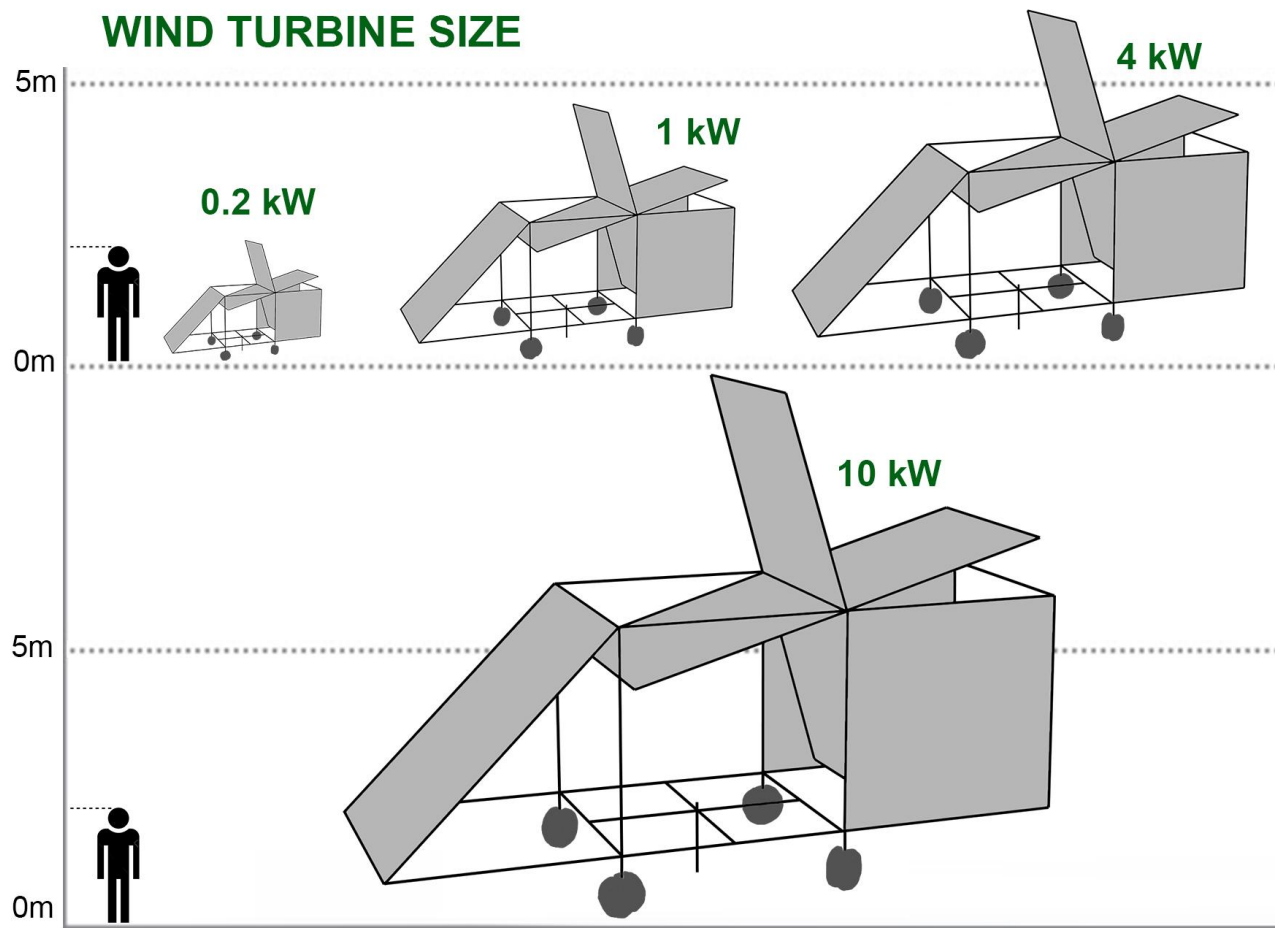


Installs without construction work on any type of terrain



SCALABLE

WIND TURBINE SIZE



Custom solution

The energy produced increases exponentially with the square of its size.

1 x 2 m



0.2 kW

2 x 4 m



1 kW

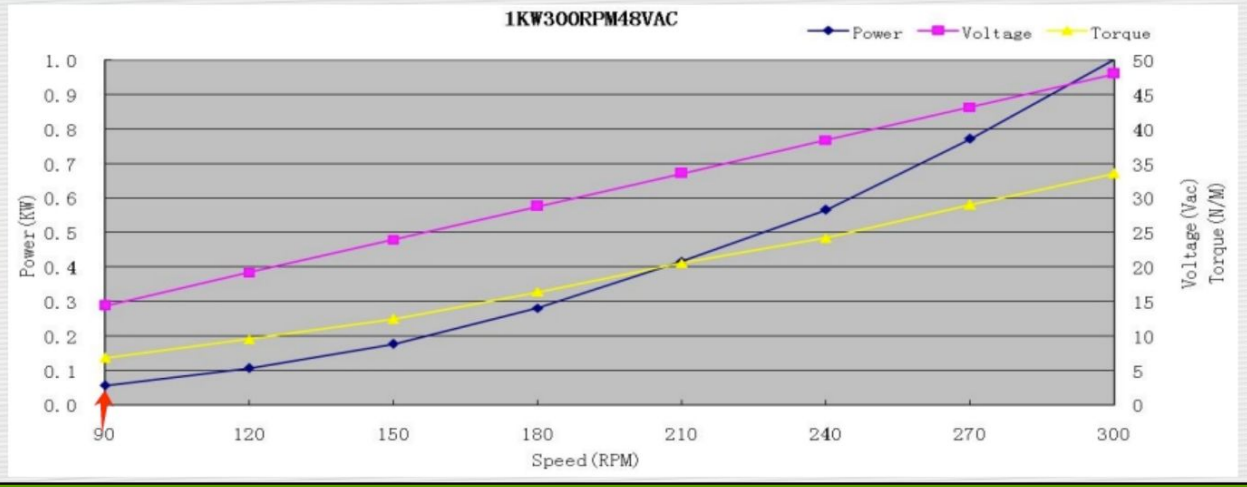
4 x 8 m



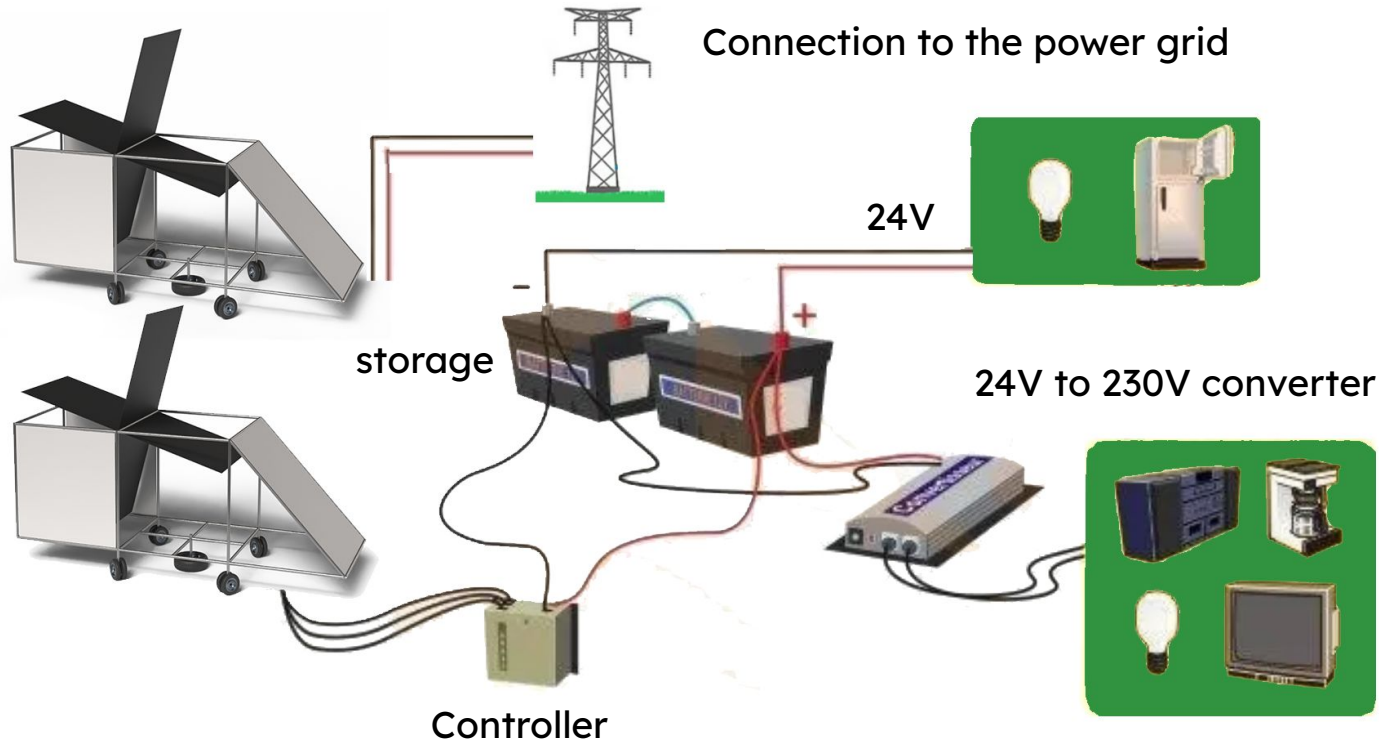
4 kW

Permanent magnet generators

Speed (RPM) - Torque (N/M) - Voltage (Vac)



Stockage et utilisation



OUR SOLUTIONS



Small

0.2 kw

5000€



Medium

1 kw

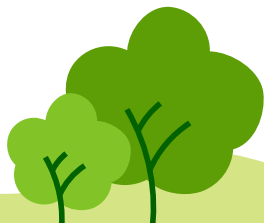
10000€



Custom-made

4 - 20 kw

> 20000€



COMPETITIVE ADVANTAGES

THEIRS

- * Too expensive, inaccessible
- * Only for large industries
- * Takes too long to install
- * Locks down the land

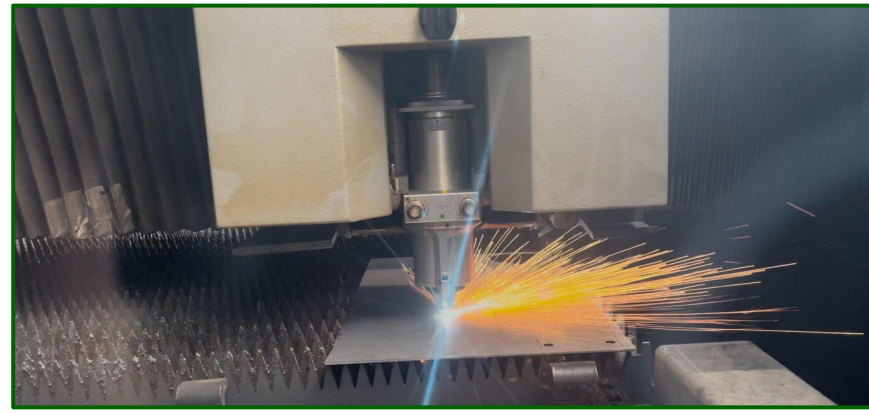
US

- * Low cost, accessible
- * Wide range of applications
- * Quick to install
- * No construction work needed

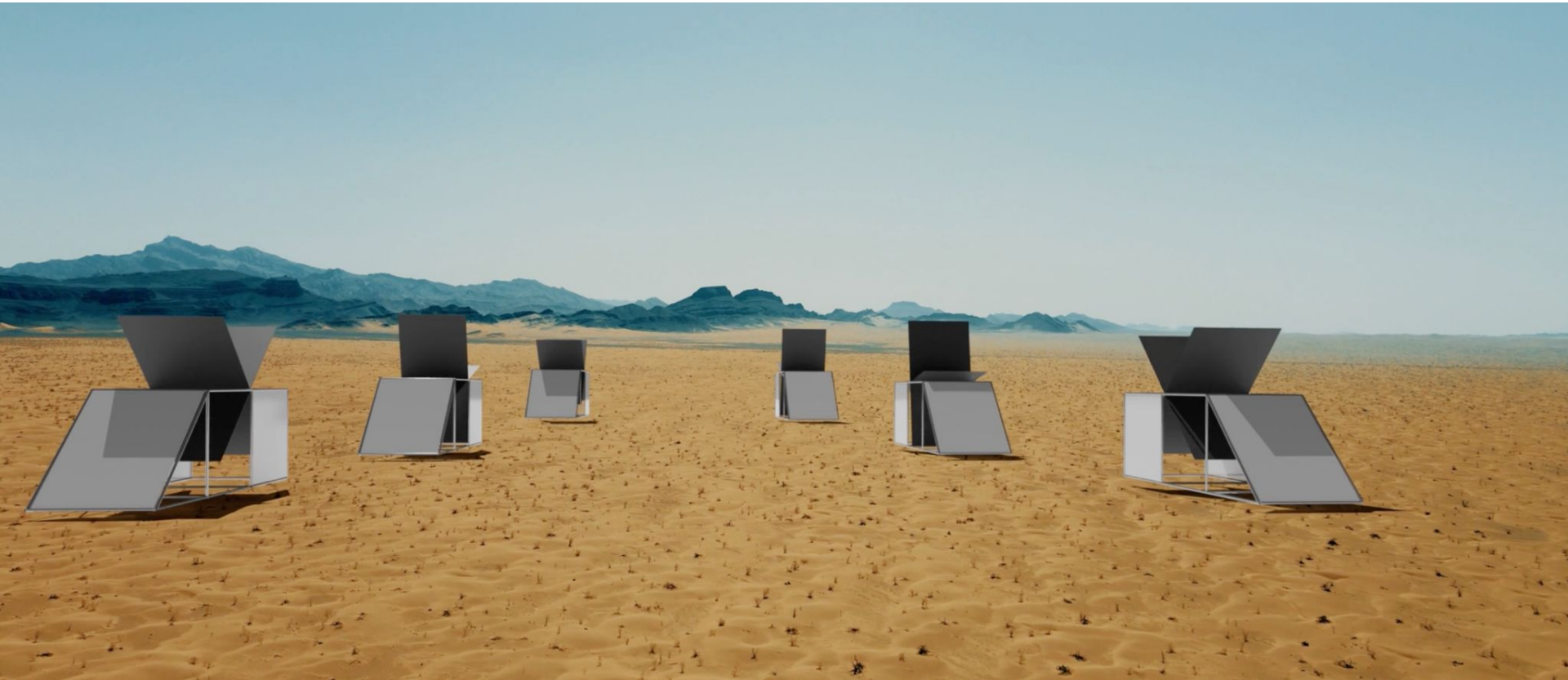


Our factory in France

We can produce on a large scale.



Example of a desert wind farm



Example of an offshore wind farm



Wind To Watt is the solution



Facing a climate crisis,
traditional solutions like wind
and solar power are not enough.

Wind to Watt open a new path
with its simple and modular
wind turbine.

To give our children a cleaner
planet.

CONCLUSION

“Join us in this meaningful journey, and together, let’s give it a global impact.”

